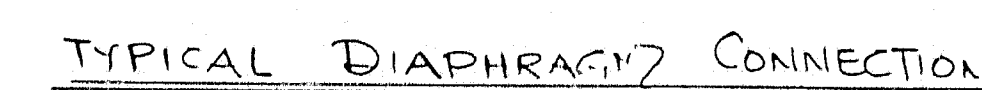


Two diagrams illustrating the correct and incorrect ways to cut a chip from a workpiece.

The top diagram shows a 'Typical' cut with a 1/2 inch chip, labeled '16WF36'. The bottom diagram shows a 'WLP on Bearing And 16WF36' cut, labeled '151339'. Both diagrams include a 1/2 inch scale bar and a 1/2 inch angle indicator.



30' x 30' 30' x 30'

30 WF 116

30 WF 99

FLR BEAMS

10' x 9' x 11' x 10'

TACK WELD

WEB FTS.

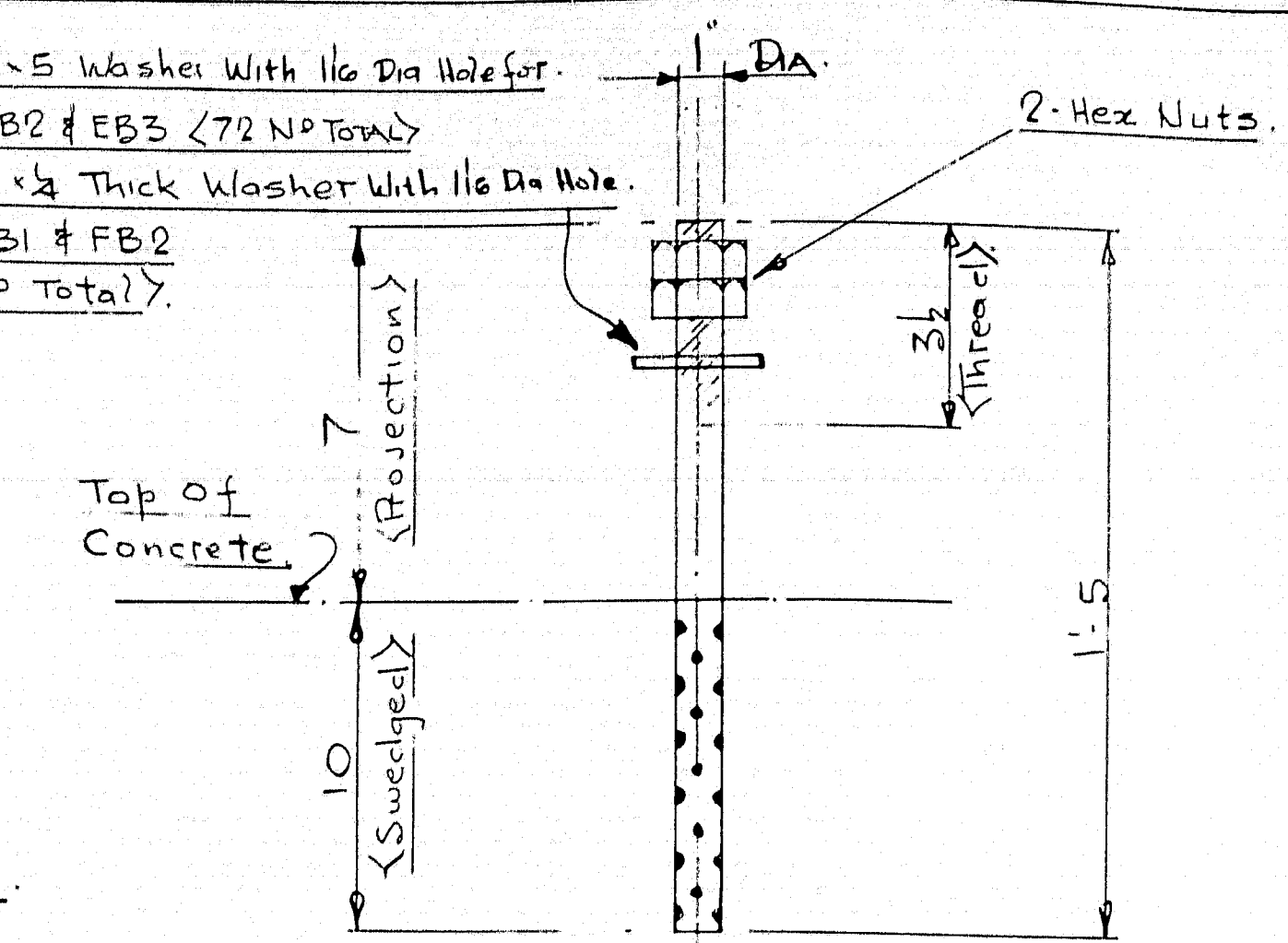
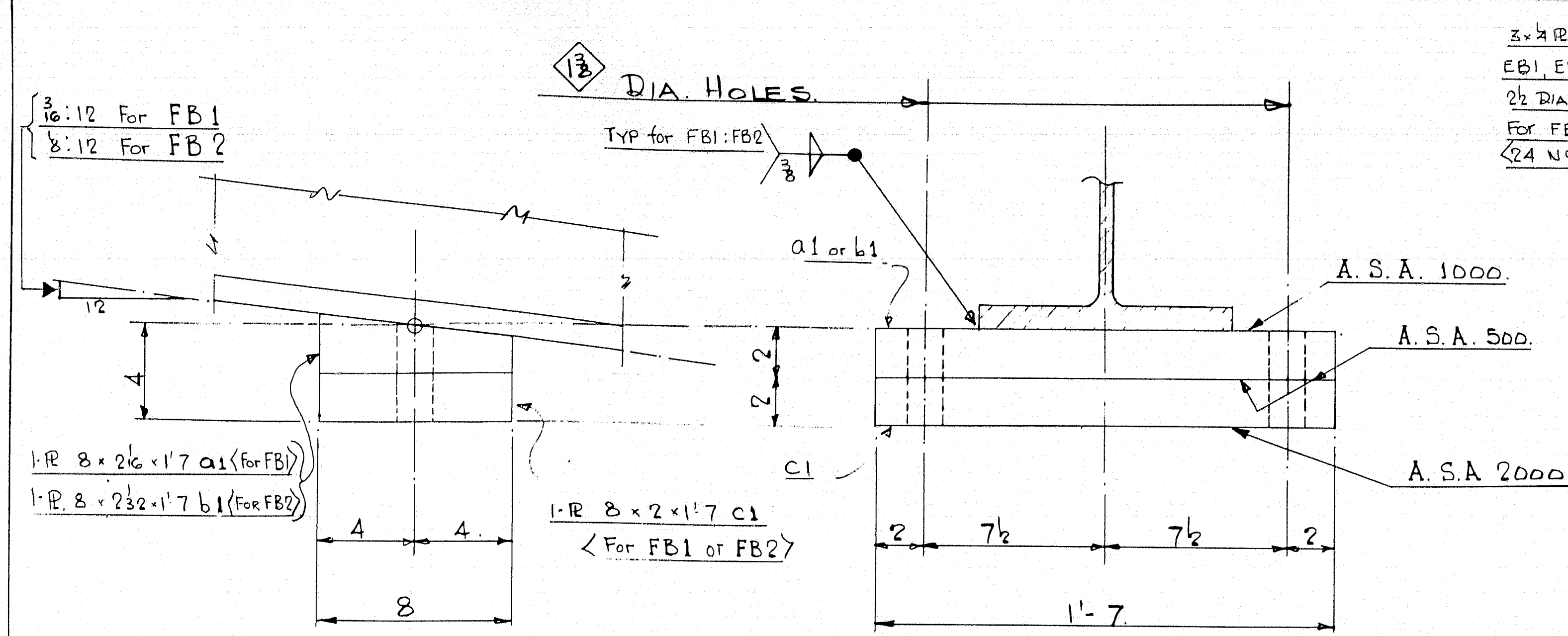
2- 18' x 2' x 2' x 2'

CONG. AS ABOVE

ERECTION DIAGRAM (South Bound.)

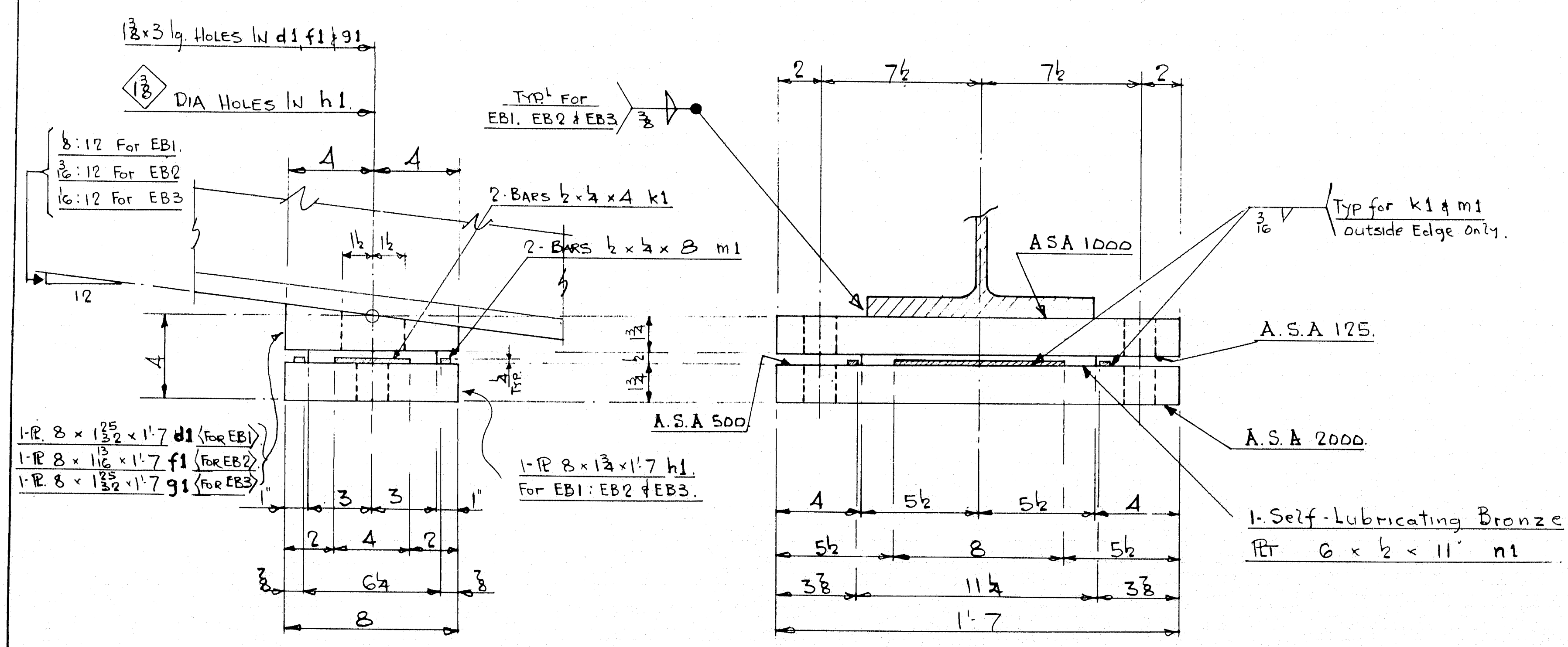
TYPICAL SPRICE DETAIL

REVISIONS		DESCRIPTION:		LAYOUT - DIAGRAM	
A		JOB:		DRAWN BY	DATE
B		BRIDGE OVER NORTH MAIN STREET		J.M.C.	
C		PITTSFIELD - MAINE		CHECKED BY	DATE
D		ARCHT. STATE OF MAINE BRIDGE DEPT.		J.K.	
E		CUSTOMER:	REED + REED	SHEET	E1
F			BATH - MAINE		
G		AUGUSTA IRON WORKS			ORDER
H		AUGUSTA, MAINE			968
J					



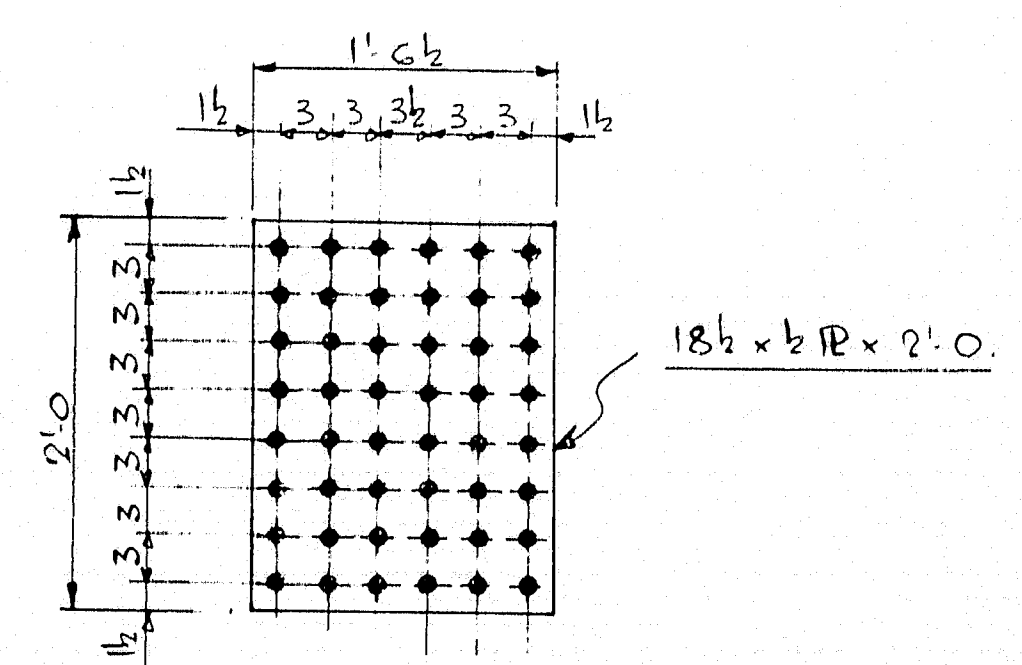
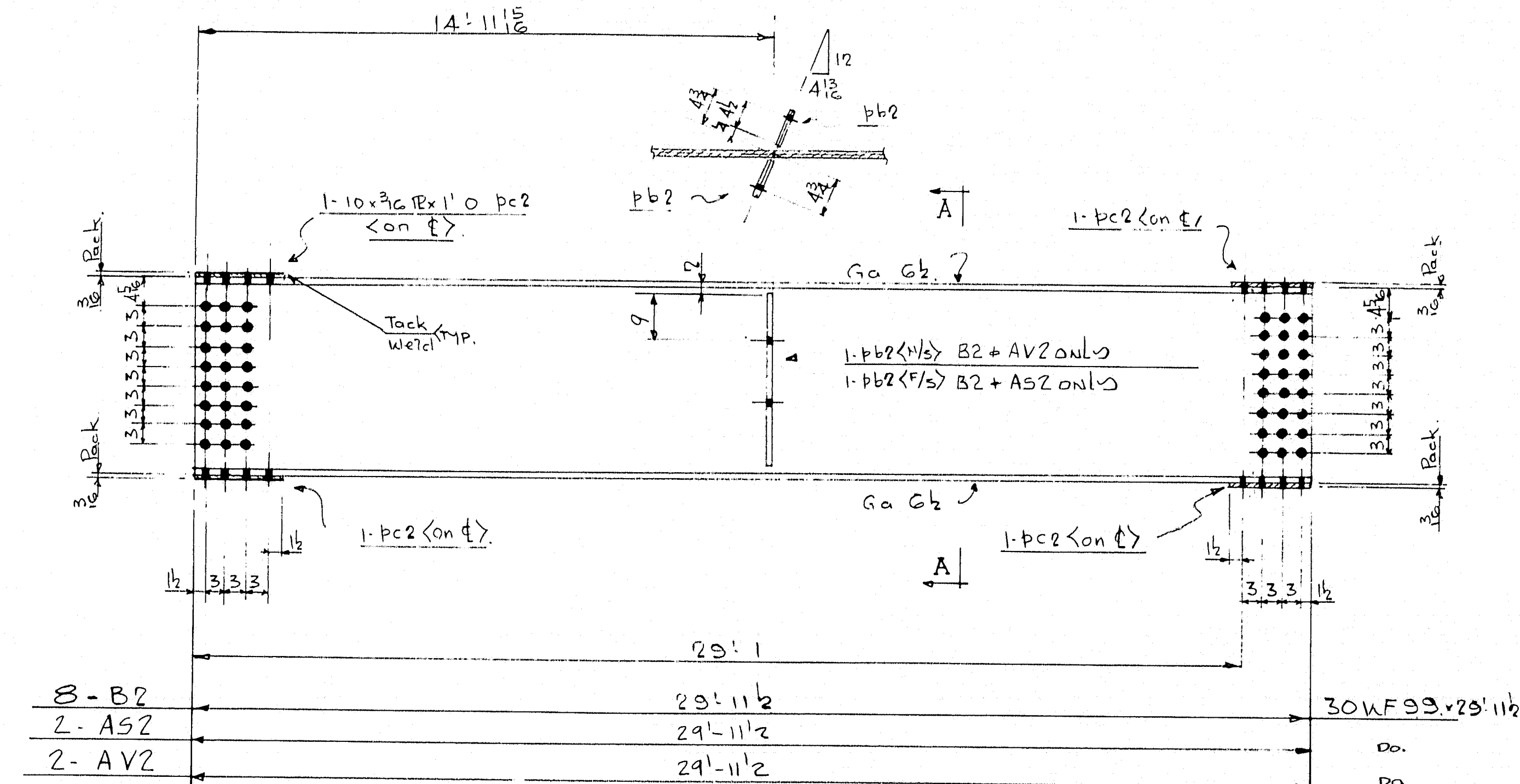
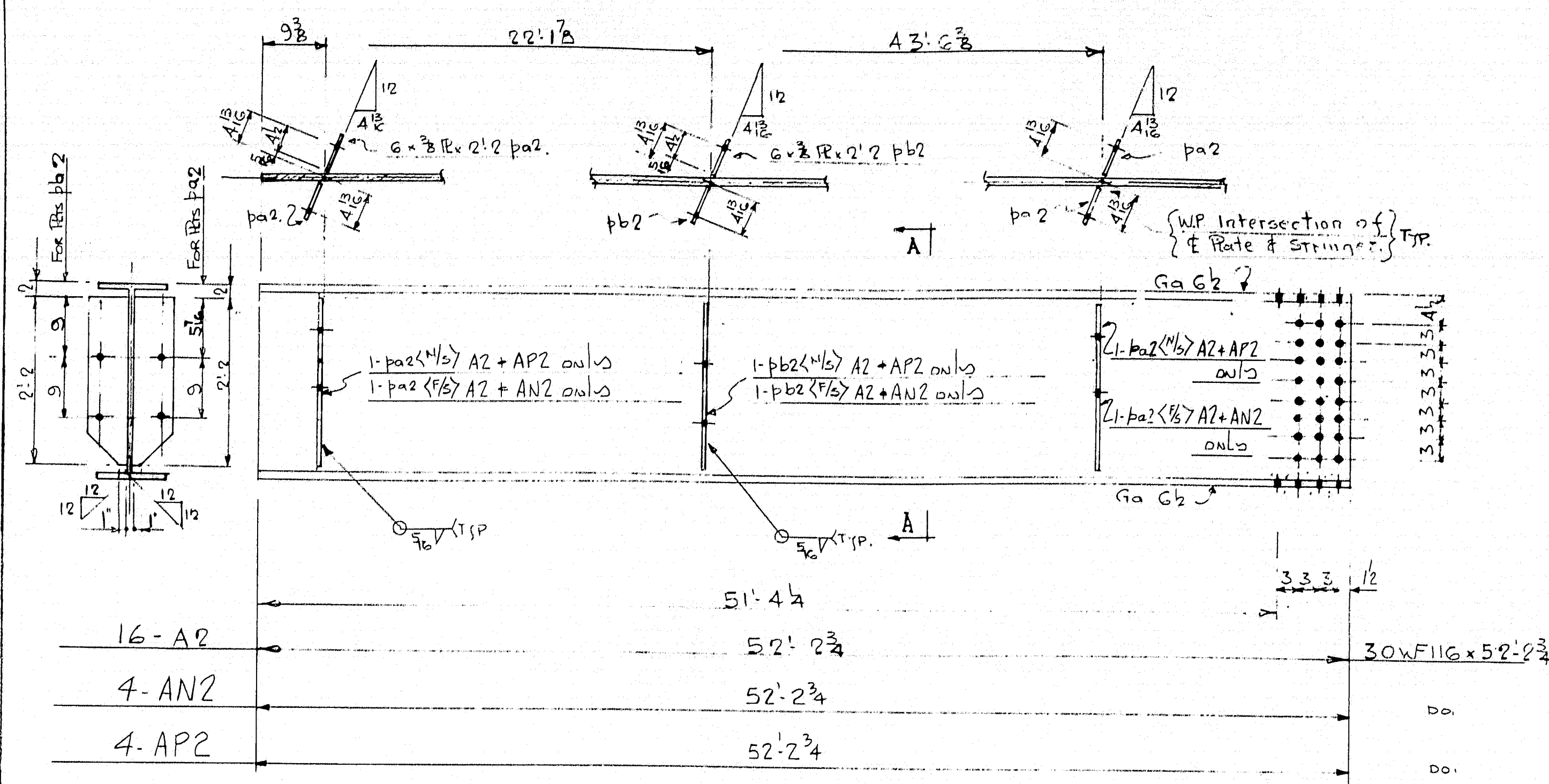
72 - ANCHOR BOLTS THUS WITH RT WASHER
24 - ANCHOR BOLTS THUS WITH RD WASHER

6 - FIXED BEARINGS - FB1 {Location: Lines a:b:c:d:e+f Abut #1 (North Bound)}
6 - FIXED BEARINGS - FB2 {Location: Lines a:b:c:d:e+f Abut #1 (South Bound)}

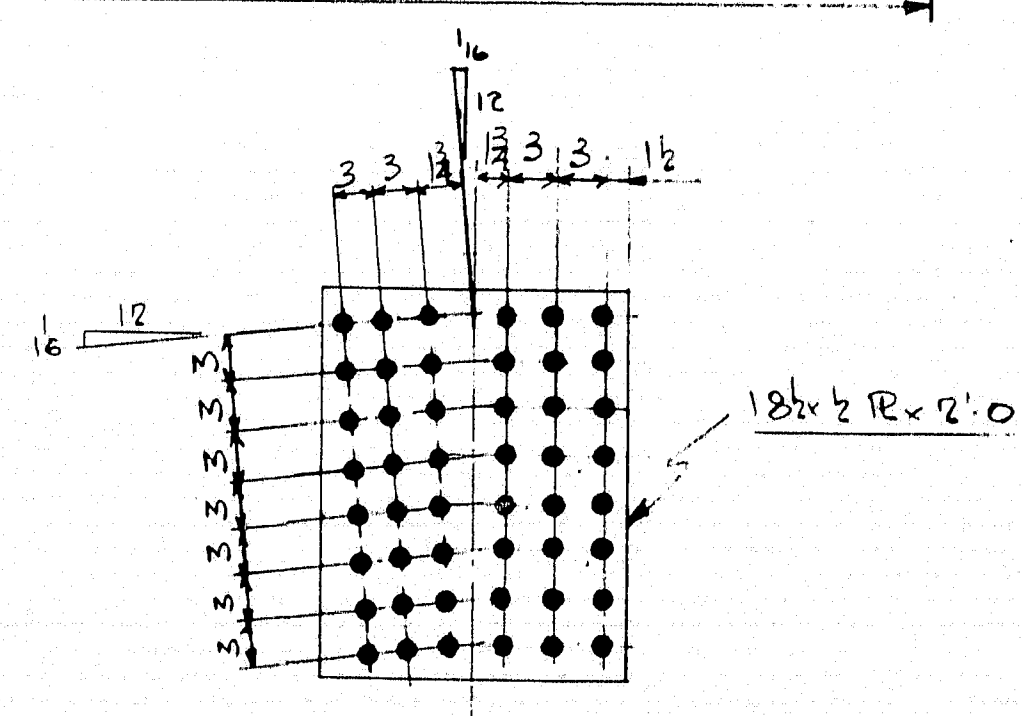


18 - EXPANSION BEARINGS EB1 {Location: Lines a:b:c:d:e+f Abut #2 North Bound
Lines a:b:c:d:e+f Pier #2 North Bound
Lines a:b:c:d:e+f Pier #1 South Bound}
6 - EXPANSION BEARINGS EB2 {Location: Lines a:b:c:d:e+f Pier #1 North Bound}
12 - EXPANSION BEARINGS EB3 {Location: Lines a:b:c:d:e+f Pier #2 South Bound
Lines a:b:c:d:e+f Abut #2 South Bound}

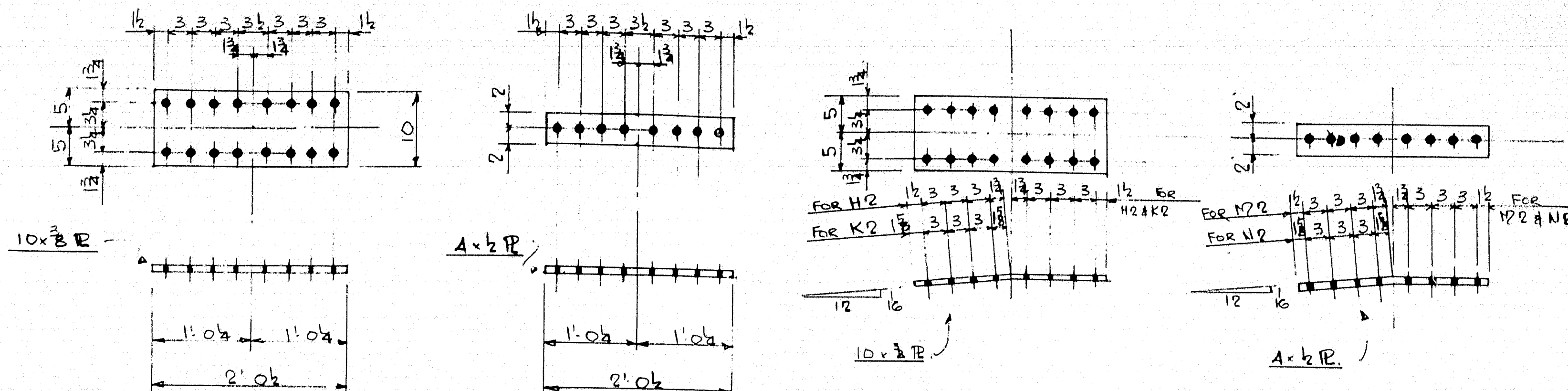
REVISIONS	DESCRIPTION	BEARING DETAILS
A	JOB:	BRIDGE OVER NORTH MAIN STREET
B		PITTSFIELD MAINE
C	ARCHT. STATE OF MAINE BRIDGE DEPT.	
D	CUSTOMER:	REED & REED BATH - MAINE
E		
F		
G		
H		
J		



24 - SPICE PLS THUS FRD C2



24 - SPICE PLS THUS FRD D2

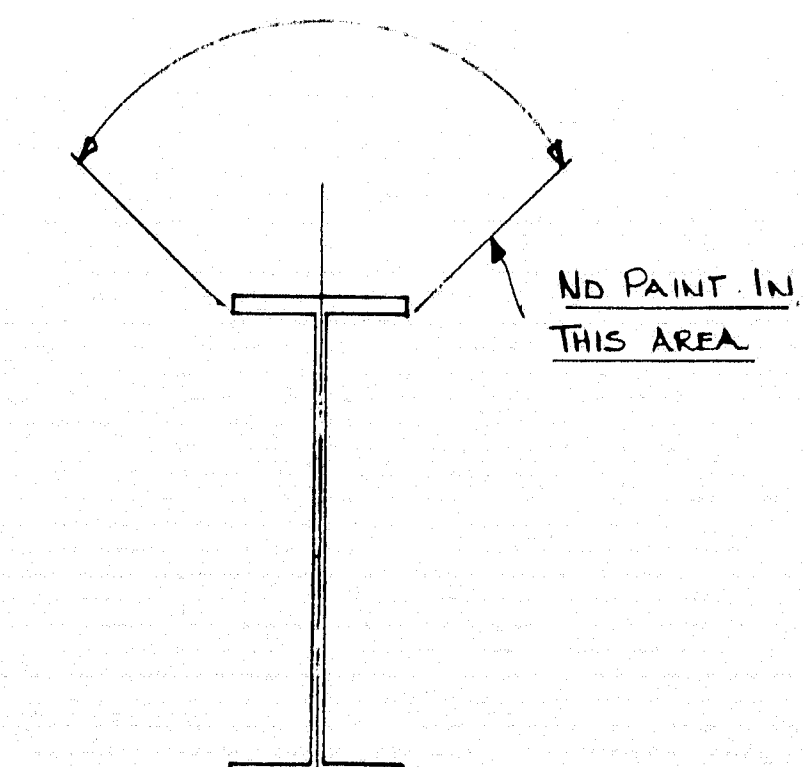
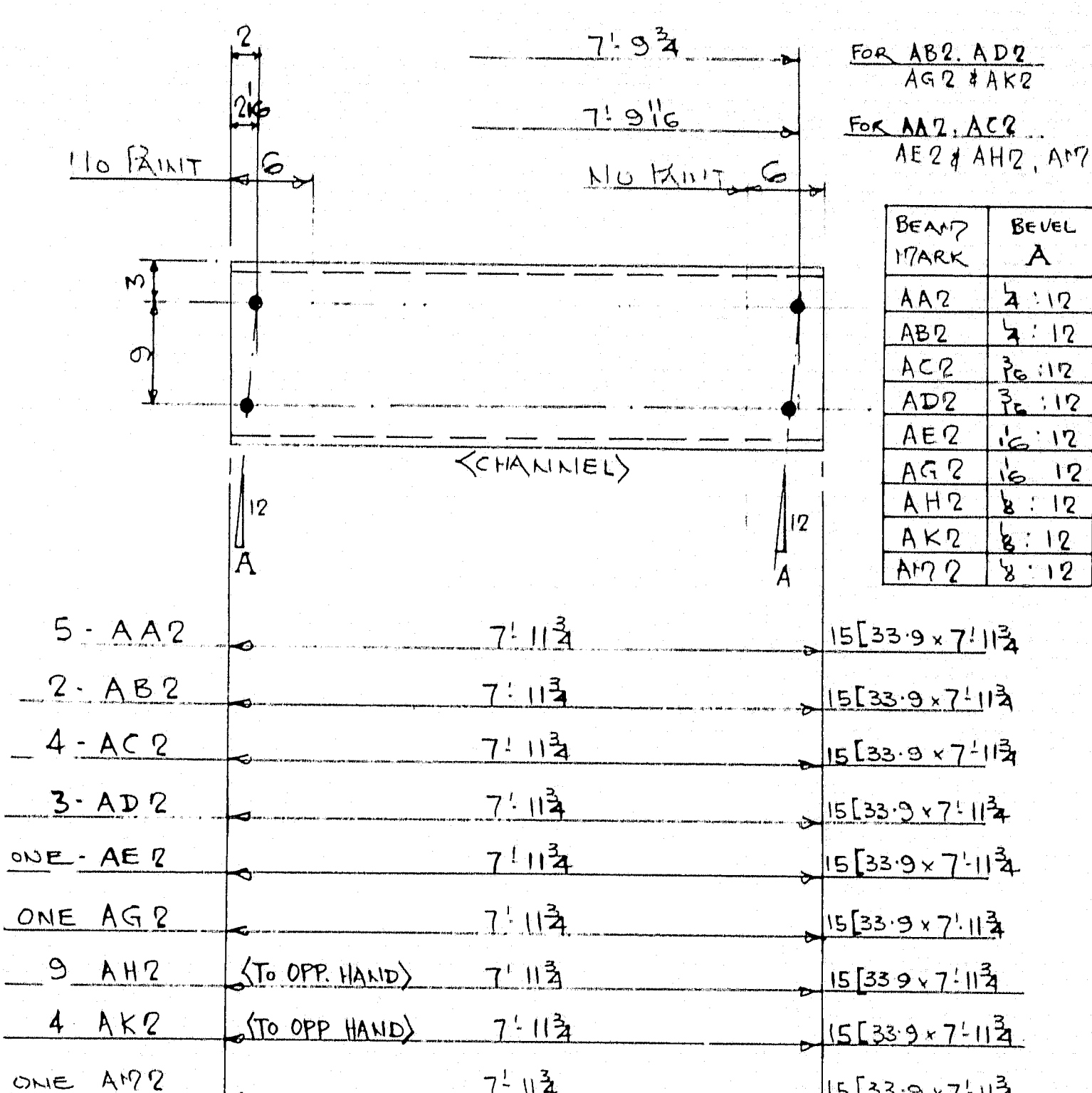
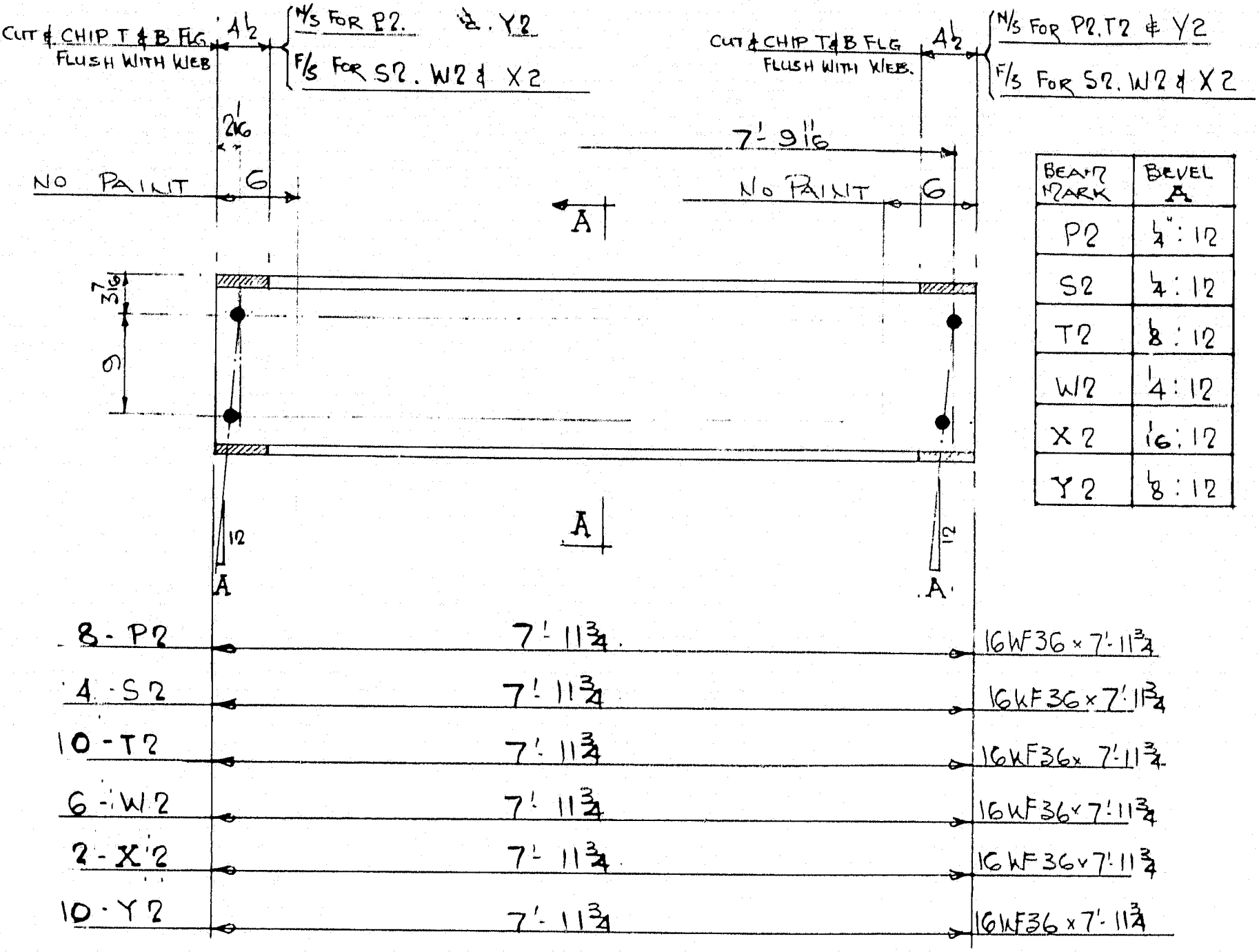


24 - SPICE PLS THUS FRD E2

48 - SPICE PLS THUS FRD G2

12 - SPICE PLS THUS FRD H2
12 - SPICE PLS THUS FRD K2

24 - SPICE PLS THUS FRD J2
24 - SPICE PLS THUS FRD N2



SECTION A - A

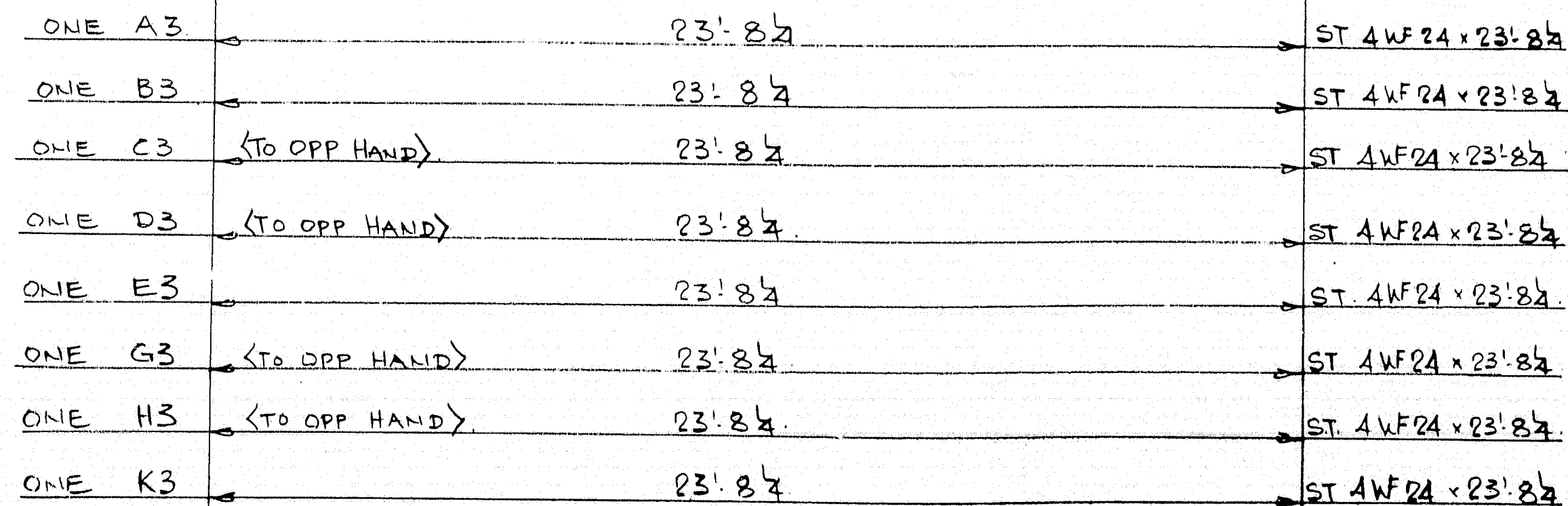
PAINT
STD RED PRIMER
EXCEPT WHERE NOTED
ALL HOLES 1 1/8 DIA.
BOLTS IN STRINGER SPICE 3/4 HS
BOLTS IN DIAPHRAGMS 3/4 COM 1/2

REVISIONS	DESCRIPTION	STRINGER + SPICE PLT DETAILS	DRAWN BY	DATE
A	JOB	BRIDGE OVER NORTH MAIN STREET	JM4	
E	PITTSFIELD MAINE			
C	ARCHT. STATE OF MAINE BRIDGE DEPT.			
D	CUSTOMER	REED + REED		
F	BATH - MAINE			
G	AUGUSTA IRON WORKS			
H	AUGUSTA, MAINE			
J	ORDER	968		

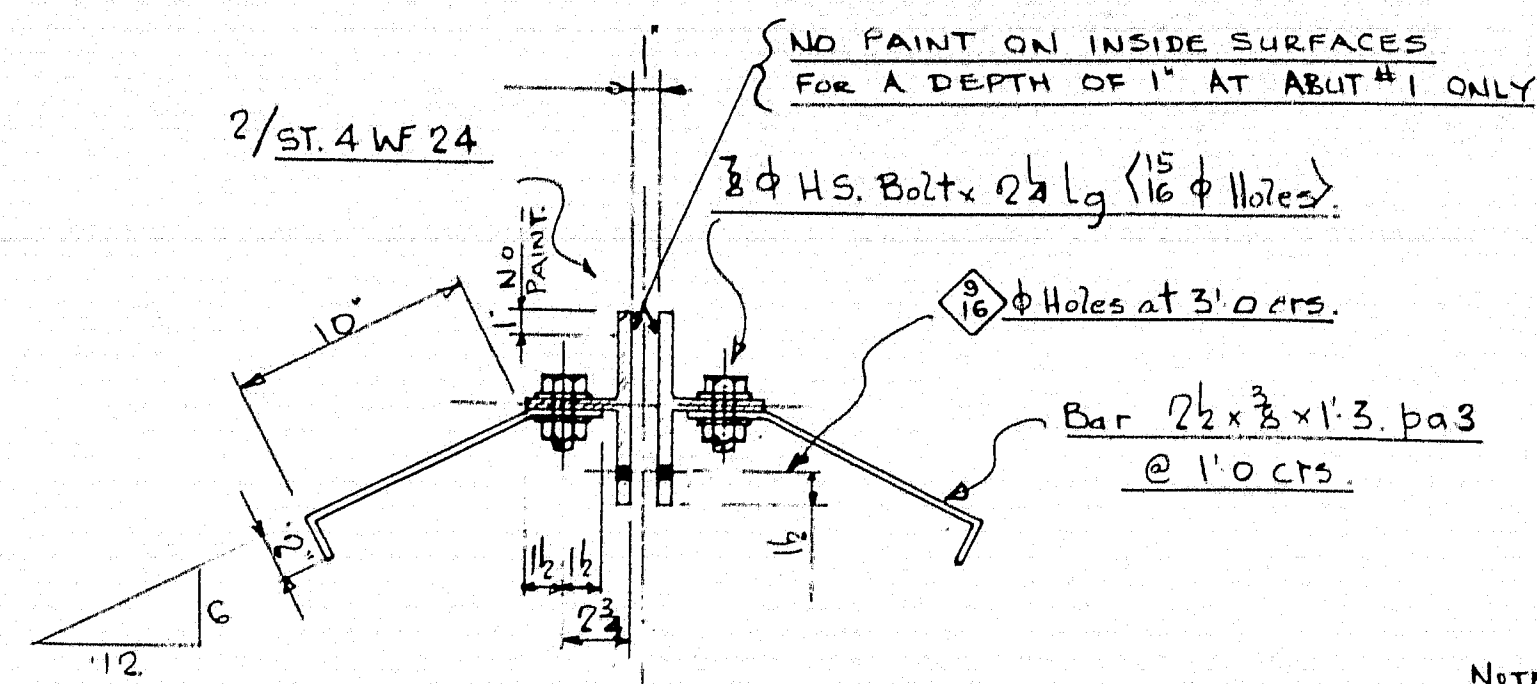
The diagram is a hand-drawn plan view of a bridge structure. It features two abutments, two piers, and various surveying data.

- Abutment #1 (Top Left):** Labeled "Bearing Abut #1". It shows a structure with a bearing of $N 21^{\circ} 48' E$ and a dimension of 12. A "Point" is marked at the end of a line extending from the abutment.
- Abutment #2 (Top Right):** Labeled "Bearing Abut #2". It shows a structure with a bearing of $N 21^{\circ} 48' E$ and a dimension of 12. A "Point" is marked at the end of a line extending from the abutment.
- Pier #1 (Bottom Left):** Labeled "Pier #1". It shows a structure with a bearing of $N 21^{\circ} 48' E$ and a dimension of 12. A "Point" is marked at the end of a line extending from the pier.
- Pier #2 (Bottom Right):** Labeled "Pier #2". It shows a structure with a bearing of $N 21^{\circ} 48' E$ and a dimension of 12. A "Point" is marked at the end of a line extending from the pier.
- Construction South Bound:** Labeled "Construction South Bound" with an arrow pointing to the right.
- Construction North Bound:** Labeled "Construction North Bound" with an arrow pointing to the left.
- SEE DETAIL A:** Labeled "SEE DETAIL A" with an arrow pointing to the right.

LAYOUT OF ARMORED JOINTS.



<u>SHOP NOTE</u>				
K3 Is The Same as A3 Except For Painting				
E3	5	5	B3	5
G3	5	5	C3	5
H3	5	5	D3	5



North Window layout line

2 2

rnp

S.T. 4 wfp2

18' 3" SPACES at 11.0' Cts of pa3 (19' 0" BQ3 READ) Shop Bolt 3/8" & Hs. v2
 (space pa3 to clear brackets).

FOR L3, M3, N3 & P3 ONLY.

2' 2 3/4"

10' 8"

19' 1 1/2"

PAINT THIS SURFACE ONLY SEE BELOW

NO PAINT.

CUT & CHIP

aa3
 bb3 OR ab3
 bb3
 aa3 OR ab3
 pb3
 aa3 OR ab3
 pb3

3/8" Holes at 3'0" Ctrs.

PAINT FULL DEPTH 1/8" FACE, 1/8" PAINT

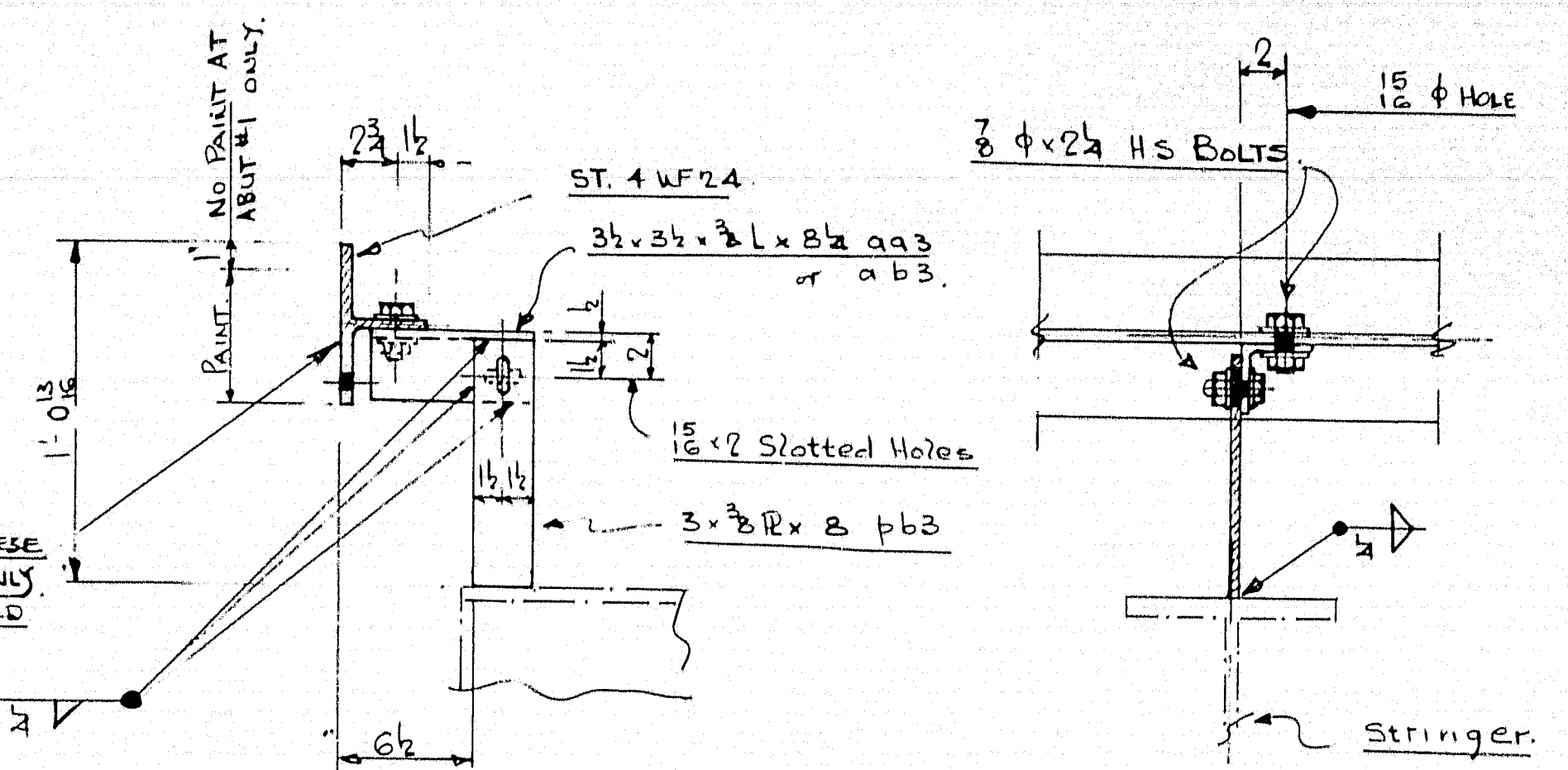
PAINT PART OF P/S FACE 1/8" PAINT

FOR L3, P3, T3 & W3 ONLY

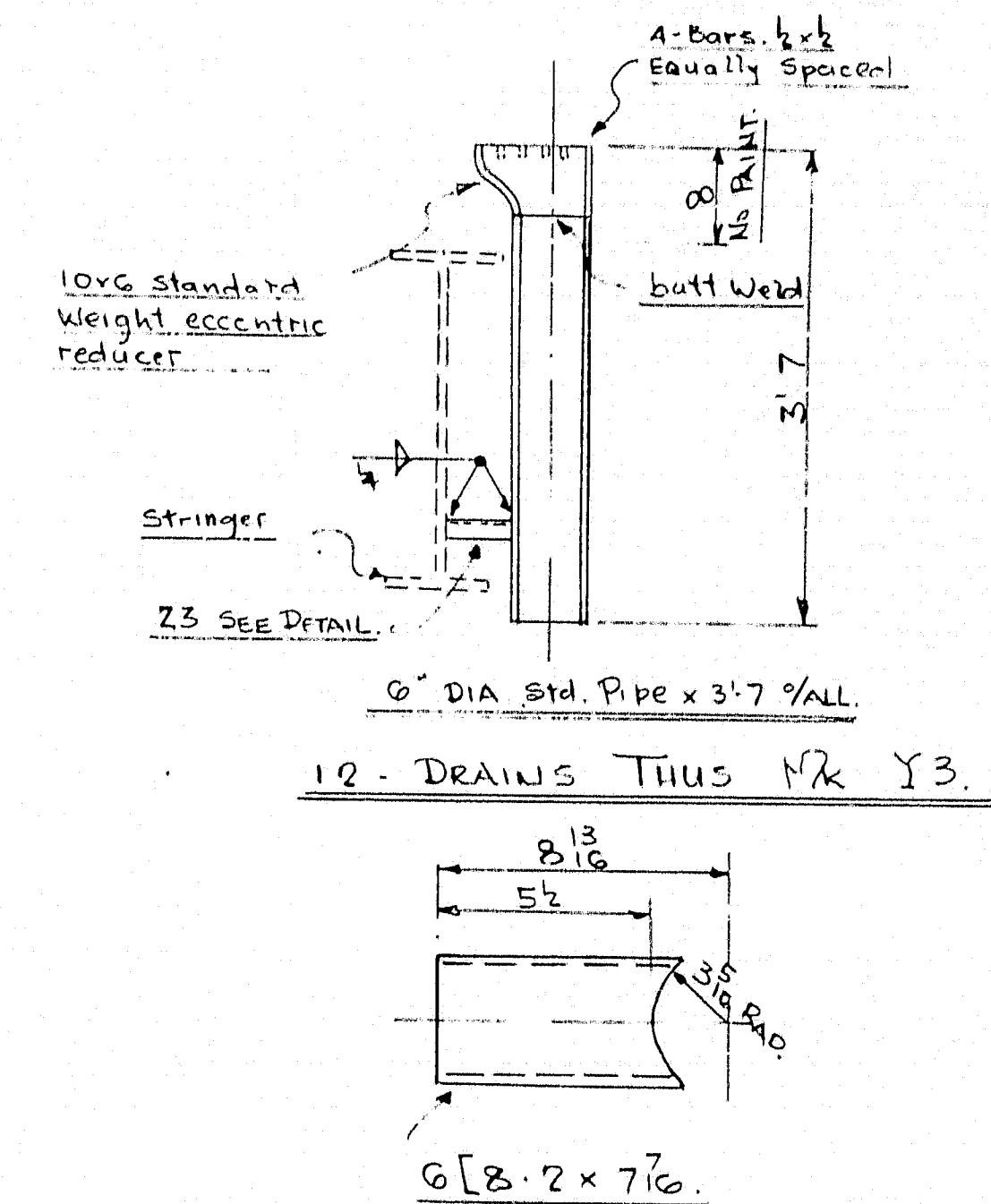
3- Brackets For {1-L 34' x 3 1/2" x 3/8" v2 aa3} Shop Bolts
 L3 & M3 only {1-R 3' x 3/8" x 3/8" pb3} 3/8" & Hs. v2

3- Brackets For {1-L 34' x 3 1/2" x 3/8" v2 ab3} Shop Bolts
 N3 & P3 only {1-R 3' x 3/8" x 3/8" pb3} 3/8" & Hs. v2

ONE L3	19' 4 1/2	ST 4WF24 x 19' 4 1/2
ONE F3	19' 4 1/2	ST 4WF24 x 19' 4 1/2
ONE N3	(TO OPP HAND)	ST 4WF24 x 19' 4 1/2
ONE P3	(TO OPP HAND)	ST 4WF24 x 19' 4 1/2
ONE S3	19' 4 1/2	ST 4WF24 x 19' 4 1/2
ONE T3	19' 4 1/2	ST 4WF24 x 19' 4 1/2
ONE W3	(TO OPP HAND)	ST 4WF24 x 19' 4 1/2
ONE X3	(TO OPP HAND)	ST 4WF24 x 19' 4 1/2



DETAIL OF JOINT ADJUSTMENT.



PAINT STD. RED PRIMER EXCEPT
WHERE NOTED
15 ϕ HOLES FOR 3 ϕ H.S. BOLTS UNLESS NOTED

REVIEWS	DESCRIPTION: ARMORED JOINT DETAILS		DRAWN BY	DATE
A	JOB:		J.M.	
B	BRIDGE OVER NORTH MAIN STREET		CHECKED BY	DATE
C	PITTSFIELD MAINE		J.K.	
D	ARCHT. STATE OF MAINE BRIDGE DEPT.			
E	CUSTOMER: REED & REED		SHEET	3
F	BATH - MAINE			
G	AUGUSTA IRON WORKS		ORDER	968
H	AUGUSTA, MAINE			
J				